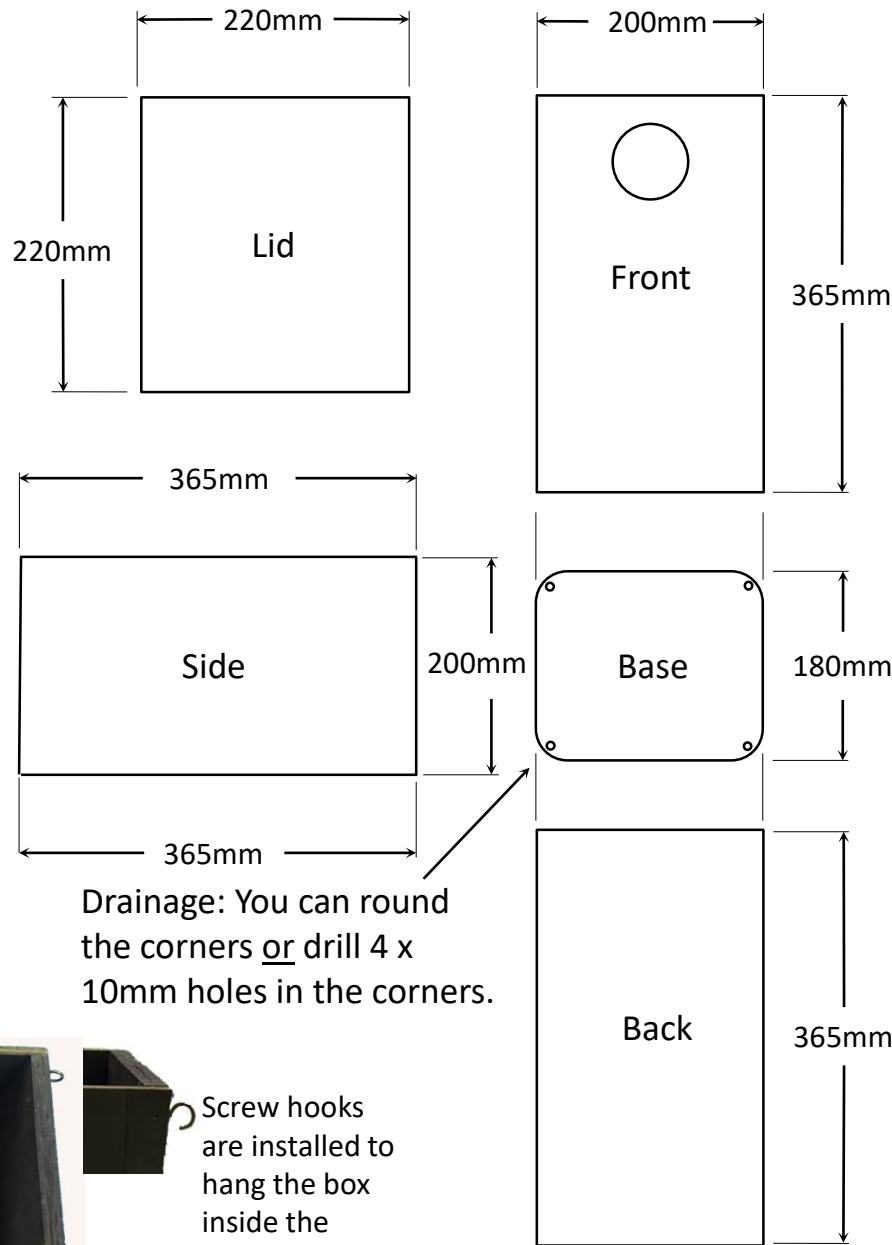
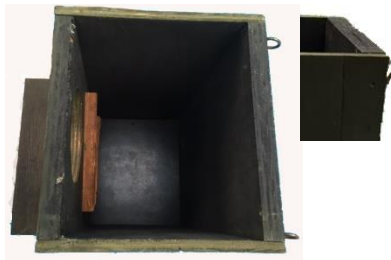


Custom Possum Box for Carer Cages



The inside of the box must have a piece of timber or mesh for the possum to use to climb up on and out of the box.

Drainage: You can round the corners or drill 4 x 10mm holes in the corners.



Screw hooks are installed to hang the box inside the cages.

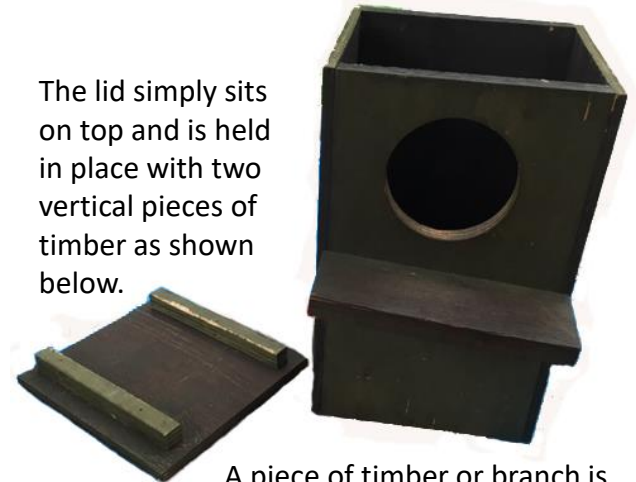
These boxes are smaller than the standard sizes so that the boxes can fit into the cages whilst the possum is in care.

The thickness of the ply is only 10mm (as compared to 19mm for the release boxes). This is because the thicker ply is not required as the box is not exposed to weather whilst in a carer's cage.

Depending on whether the box is going to be used for ringtail possums or brushtail possums the opening hole will need to be 100mm or 120mm.

This size is not suitable as a release box.

The lid simply sits on top and is held in place with two vertical pieces of timber as shown below.



A piece of timber or branch is securely connected to the front of the box so that possum has easy access.